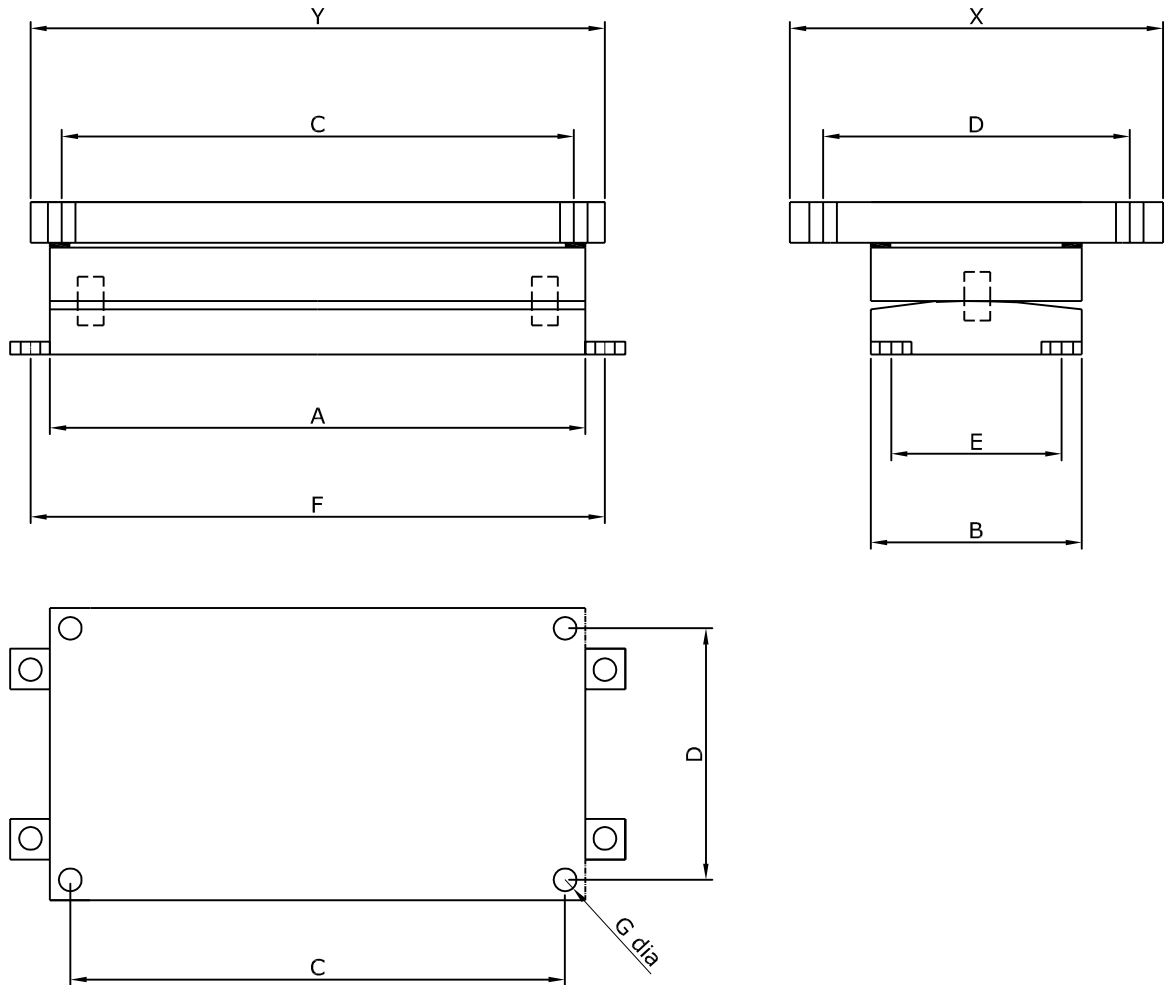


LINE ROCKER BEARINGS FREE-Type BDA



Brg ref.	Vt. Load kN	X* mm	Y* mm	A mm	B mm	C* mm	D* mm	E mm	F mm	G mm	H mm	Mass kg
BDA25/15/10/10	250	200	210	180	90	160	150	58	213	13	60	9
BDA50/15/10/10	500	240	290	260	130	240	190	98	293	13	80	23
BDA75/15/10/10	750	270	350	320	160	300	220	128	353	13	95	41
BDA100/15/10/10	1000	295	400	370	185	350	245	153	403	13	108	61
BDA125/15/10/10	1250	315	440	410	205	390	265	173	443	13	118	81
BDA150/15/10/10	1500	335	480	450	225	430	285	193	483	13	128	105
BDA175/15/10/10	1750	350	510	480	240	460	300	198	523	17	134	125
BDA200/15/10/10	2000	365	540	510	255	490	315	213	553	17	142	148
BDA250/15/10/10	2500	400	610	580	290	560	350	248	623	17	160	215
BDA300/15/10/10	3000	425	660	630	315	610	375	273	673	17	175	276

Notes:

Bearings are designed for 15 Mpa concrete pressure, loads may be increased with higher strength concrete.

* These dimensions are for 10mm movement in all directions and are increased according to additional requirements.